

Maximum picking performance with the lowest energy consumption

Powerful drive motor for high productivity

Intuitive operation via JetPilot multi-functional steering wheel

Individual options for an optimum workstation



## ECE 220/225

### Horizontal order picker (2,000/2,500 kg)

The Jungheinrich ECE 220/225 combines maximum picking performance with optimum energy efficiency and first-class operator comfort. The basis for this is the combination of high technical performance with a number of ergonomic advantages.

Various options packages and the load/steer angle-dependent Curve Control assistance system fully exploit the strengths of the ECE 220/225: Dynamic acceleration, safe cornering and high maximum speed simultaneously with the best possible energy utilisation.

In addition, there are the advantages of a perfect workstation for comfortable picking: The central operator position is not just characterised by optimum all-round visibility but also by the

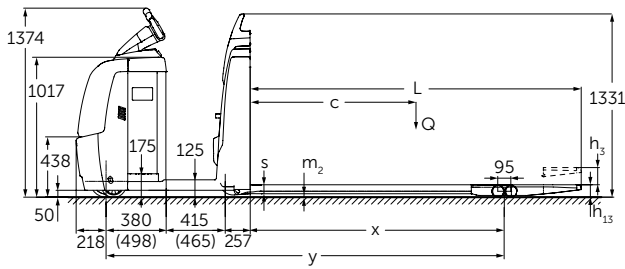
easy availability of all controls and accessory parts. The JetPilot multifunctional steering wheel is also convincing due to:

- Intuitive and comfortable operation, similar to a car, plus a safe and secure grip.
- Lessening the strain on neck and spinal column when cornering.
- One-handed operation and automatic return of the steering wheel to straight line travel.
- Adjustable to individual body size.

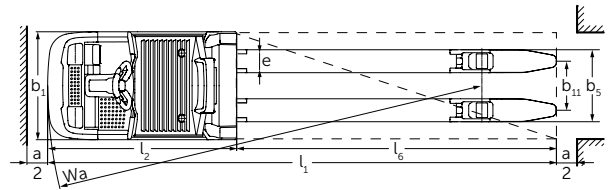
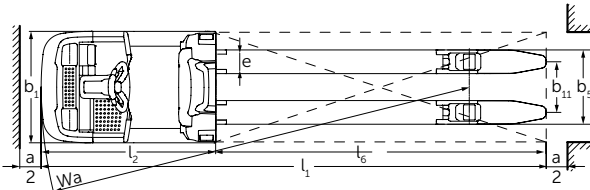
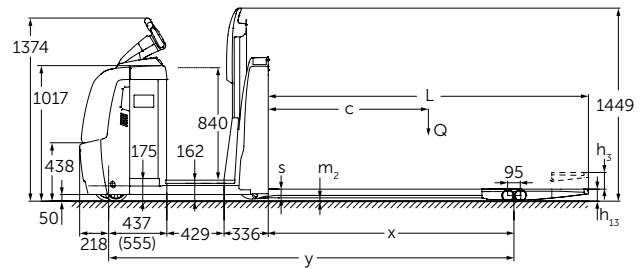
The comfort features already installed in the standard models and the comprehensive options guarantee appropriate adaptation to suit all applications.

# ECE 220/225

ECE 220/ 225



ECE 220 HP/ 225 HP



Measures depending on fork length

Fork length l	Fork overhang	Capacity Q	Overall length l <sub>1</sub> 2) 4) 5)	Wheelbase y 1) 2) 4) 5)	Turning radius W <sub>a</sub> 1) 2) 4) 5)	Load distance x 1)	Working aisle width Ast 2) 4) 5) 6)
(mm)	(mm)	(t)	(mm)	(mm)	(mm)	(mm)	(mm)
1000	186	2.0 / 2.5	2270	1784	2002	732	2470
1150	186	2.0 / 2.5	2420	1934	2152	882	2670
1250	186	2.0 / 2.5	2520	2034	2252	758	2720
1400	186	2.5	2670	2184	2402	1132	2870
1400	560	2.0 / 2.5	2670	1810	2028	758	2870
1450	560	2.0 / 2.5	2720	1860	2078	808	2920
1600	186	2.5	2870	2384	2602	1332	3070
1600	560	2.0 / 2.5	2870	2010	2228	958	3070
1880	560	2.5	3150	2290	2508	1238	3350
1950	560	2.5	3220	2360	2578	1308	3470
2110	186	2.5	3380	2520	2738	1842	3580
2180	800	2.5	3450	2350	2568	1298	3650
2310	186	2.5	3580	3094	3312	2042	3800
2400	560	2.5	3670	2810	3028	1758	3870
2400	800	2.5	3670	2570	2788	1518	3870
2550	800	2.5	3820	2720	2938	1668	4020
2850	800	2.5	4120	3020	3238	1968	4320
2900	800	2.5	4170	3070	3288	2018	4370
3100	800	2.5	4370	3270	3488	2218	4570

<sup>1)</sup>With lowered load section = value + 82 mm

<sup>2)</sup>With option for extended operator position = value + 50 mm

<sup>3)</sup>Only with Drive Plus or Drive & Eco Plus options package

<sup>4)</sup>With XL battery compartment = value + 118 mm

<sup>5)</sup>For ECE 220 HP / 225 HP = value + 150 mm

<sup>6)</sup>Ast value: fork length 1150 mm with 1 pallet 1200x800 mm; fork length 1950 mm with 2 pallets (2x) 1000x800 mm; fork length 2310 mm with 2 pallets (2x) 1165x1165 mm; all other values without protruding load (fork length = load length)

# Technical data in line with VDI 2198

		Jungheinrich						
				ECE 220	ECE 225	ECE 220 HP	ECE 225 HP	
Identification	1.1	Manufacturer (short form)						
	1.2	Model						
	1.3	Drive		Electrics				
	1.4	Manual, pedestrian, stand-on, seated, order picker operation		order picker				
	1.5	Load capacity/rated load	Q t	2	2.5	2	2.5	
	1.6	Load centre distance	c mm	600	1,200	600	1,200	
	1.8	Load distance	x mm	882 <sup>6)</sup>	1,518 <sup>6)</sup>	882 <sup>6)</sup>	1,518 <sup>6)</sup>	
	1.9	Wheelbase	y mm	1,934 <sup>6)/7)</sup>	2,570 <sup>6)/7)</sup>	2,084 <sup>6)/9)</sup>	2,720 <sup>6)/9)</sup>	
Weights	2.1.1	Net weight incl. battery (see row 6.5)		kg	893	975	1,028	1,110
	2.2	Axle load, w. load front / rear		kg	992 / 1,901	1,130 / 2,345	1,048 / 1,980	1,135 / 2,475
	2.3	Axle load w.o. load front / rear		kg	682 / 211	763 / 212	768 / 260	847 / 263
Wheels / frame	3.1	Tyres		Vulkollan				
	3.2	Tyre size, at front		Ø 230 x 78				
	3.3	Tyre size, at rear		Ø 85 x 85				
	3.4	Additional wheels (dimensions)		Ø 180 x 65				
	3.5	Wheels, number front/rear (x = driven wheels)		1+1x/4				
	3.6	Tread width, front	b <sub>10</sub> mm	481				
	3.7	Tread width, rear	b <sub>11</sub> mm	338 / 368 / 498				
Basic dimensions	4.4	Lift		h <sub>3</sub> mm	125			
	4.9	Height of tiller in drive position min. / max.		h <sub>14</sub> mm	1,374 / 1,418			
	4.15	Lowered height		h <sub>13</sub> mm	90			
	4.19	Overall length		l <sub>1</sub> mm	2,420 <sup>7)/9)</sup>	3,670 <sup>7)/9)</sup>	2,570 <sup>9)</sup>	3,820 <sup>9)</sup>
	4.20	Length incl. back of forks		l <sub>2</sub> mm	1,270 <sup>7)/9)</sup>	1,270 <sup>7)/9)</sup>	1,420 <sup>9)</sup>	1,420 <sup>9)</sup>
	4.21	Total width		b <sub>1</sub> /b <sub>2</sub> mm	810			
	4.22	Fork dimensions		s/e/l mm	60 / 172 / 1,150	60 / 172 / 2,400	60 / 172 / 1,150	60 / 172 / 2,400
	4.25	Width over forks		b <sub>5</sub> mm	510 / 540			
	4.32	Floor clearance centre wheelbase		m <sub>2</sub> mm	25			
	4.34	Aisle width for pallets 800 x 1200 lengthways		Ast mm	2,670 <sup>1)/7)/9)</sup>	3,870 <sup>1)/7)/9)</sup>	2,820 <sup>1)/9)</sup>	4,020 <sup>1)/9)</sup>
4.35	Turning radius		W <sub>a</sub> mm	2,152 <sup>6)/7)/9)</sup>	2,788 <sup>6)/7)/9)</sup>	2,302 <sup>6)/9)</sup>	2,938 <sup>6)/9)</sup>	
Performance data	5.1	Travel speed, w. / w.o. load		km/h	9.5 / 12.5	9.2 / 14 <sup>5)</sup>	9.5 / 12.5	9.2 / 14 <sup>5)</sup>
	5.2	Lift speed, w. / w.o. load		m/s	0.07 / 0.1			
	5.3	Lowering speed, laden/unladen		m/s	0.07 / 0.06			
	5.8	Max. gradeability, w. / w.o. load		%	6 / 15			
	5.10	Service brake			generated			
Electrics	6.1	Drive motor rating S2 60 min.		kW	2.8	3.2 <sup>4)</sup>	2.8	3.2 <sup>4)</sup>
	6.2	Lift motor rating at S3 10%		kW	1.5			
	6.3	Battery as per DIN 43531 / 35/36 A, B, C, no			no			
	6.4	Battery voltage/nominal capacity K5		V/Ah	24 / 465 <sup>8)</sup>			
	6.5	Battery weight		kg	370 <sup>8)</sup>			
	6.6	Energy consumption according to VDI cycle		kWh/h	0.53	0.49 <sup>2)</sup>	0.55	0.5 <sup>2)</sup>
	6.7	Throughput		t/h	136	180 <sup>3)</sup>	136	180 <sup>3)</sup>
	6.8	Energy consumption at max. throughput		kWh/h	1.36	1.41 <sup>3)</sup>	1.37	1.47 <sup>3)</sup>
Misc.	8.1	Type of drive control			AC SpeedControl			
	8.4	Sound pressure level at operator's ear according to EN 12053		dB (A)	62			
	8.6	Steering			electric steering			

<sup>1)</sup> Diagonal in accordance with VDI: + 200 mm

<sup>2)</sup> With Drive & Eco Plus performance package

<sup>3)</sup> With Drive Plus options package

<sup>4)</sup> With Drive Plus or Drive & Eco Plus options package (standard: 2.8 kW)

<sup>5)</sup> With Drive Plus or Drive & Eco Plus options package (standard: 9.5 / 12.5 km/h)

<sup>6)</sup> With lowered load section = value + 82 mm

<sup>7)</sup> With option for extended operator position = value + 50 mm

<sup>8)</sup> With XL battery compartment: 24 V / 620 Ah

<sup>9)</sup> With XL battery compartment = value + 118 mm

# Benefit from the advantages



Comfortable operation and fast order picking



JetPilot – exclusive from Jungheinrich



Solid rubber or steel bumper (optional)



Lifting stand-on platform (HP-LJ) for 2nd level order picking (optional)

## Powerful and efficient drive concept

- Powerful acceleration and high top speed.
- Safe cornering speed due to Curve Control (optional).
- Optional 'Drive Plus' performance package with highly efficient 3.2 kW motor for even greater drive and acceleration performance with load-dependent Curve Control.
- Optional 'Drive & Eco Plus' performance package for additional energy savings.
- Regenerative braking with energy recovery.

## Perfect workstation for maximum picking performance

- Generous space, even for tall operators.
- Wide range of tailored storage options such as the shrink wrap holder on the front cover.
- Backrest versions to suit different needs.
- Additional cushioned stand-on platform (optional).
- Touch mode in the backrest for faster order picking (optional).
- Rapid lifting of the load by double pressing of the lift button (optional).

## Rugged construction for the toughest applications

- Impact-resistant steel drive panel.
- Extra-high frame apron in high-grade steel on front cover.
- Tension-proof load forks with draw bar kinematics prevent distortion even with heavy loads and long forks.

- 2.5 t capacity for the transport of up to three pallets simultaneously.

## Comfortable and safe order picking

The hydraulic lifting stand-on platform (HP) offers the best solution for frequent order picking from the second racking level (optional):

- Safe and rapid raising and lowering of the operator up to the height of the battery cover.
- Effortless operation of platform via foot pedal, leaving hands free for order picking.
- High degree of order picking efficiency due to immediate proximity of operator to load.
- The JetPilot can be raised together with the platform (HP-LJ), allowing the truck to be positioned even when the platform is raised (optional).

## Long operating times

Energy-efficient 3-phase AC technology and high battery capacities allow for long operating times:

- Different batteries available from 375-620 Ah.
- Lateral battery exchange for multi-shift applications (optional).

## Complete overview provided by central display and setting instrument

- Activation of the truck by EasyAccess via softkey, PIN code or transponder card (optional).

- The 2-inch display provides information on the battery discharge status, number of operating hours, travel speed as well as error codes and offers the option of selecting from three travel programs via softkey (optional).

## All the better to see and be seen

- Integrated dayLED front spotlight for better visibility in poorly lit halls (optional).
- Floor spot: The risk of collision at blind spots is significantly reduced by a red light spot projected on the floor approximately 3 m in front of the truck (optional).

## Lithium ion technology

- High truck availability due to extremely short charging times: After a boost charging time of just 30 minutes, the battery is charged to 50% and after 80 minutes to 100%.
- No battery changing necessary.
- Proof voltage always ensures full power.
- Costs are saved due to longer service life and low maintenance compared with lead-acid batteries.
- No charging rooms and ventilation required as there is no build up of gas.

## Additional equipment

- Comprehensive accessories allow for individual tailoring to your requirements:
- Additional accessories for working at the second rack-level.
- Sturdy, universally applicable options bracket, e.g. for radio data transmission components.

## Jungheinrich UK Ltd.

Head Office:  
Sherbourne House  
Sherbourne Drive  
Tilbrook  
Milton Keynes MK7 8HX  
Telephone 01908 363100  
Fax 01908 363180

info@jungheinrich.co.uk  
www.jungheinrich.co.uk

The German production facilities in Norderstedt and Moosburg are certified. **ISO 9001**  
**ISO 14001**

Jungheinrich fork lift trucks meet European safety requirements.



**JUNGHEINRICH**  
Machines. Ideas. Solutions.