

Shock-Protect provides vibration damping to protect the operator, truck and load

Maintenance-free 3-phase AC drive motor provides acceleration and high speed

Compact design ensures flexibility and manoeuvrability

Optimum ground clearance due to lifting battery and stand-on platform

Outstanding stability and optimal driving characteristics thanks to Pro-Trac-Link



## ECE 118

### Horizontal order picker (1,800 kg)

The ECE 118 is ideal for efficient order picking on uneven floors. The initial lift enables the ergonomic stand-on platform and the battery to lift simultaneously. This increases ground clearance over warehouse thresholds and uneven floors. The initial lift also makes it easier to drive into an HGV.

The ECE 118 is equipped with a top mounted mechanical tiller as standard.

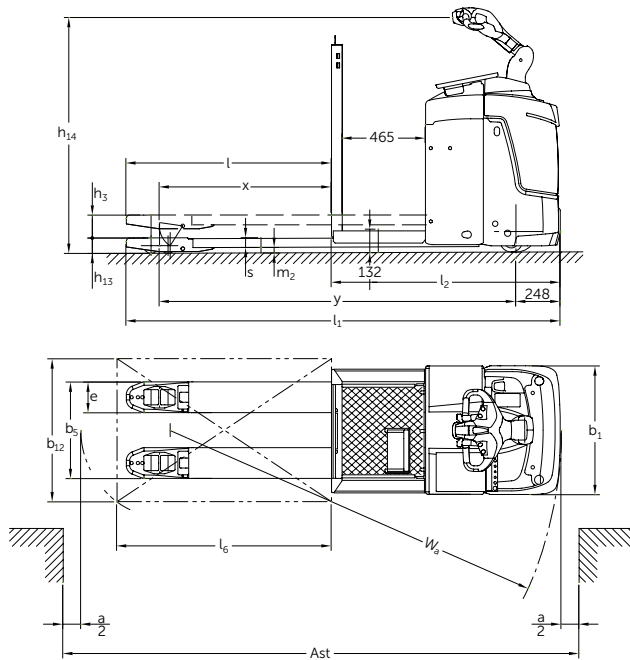
All operating controls are within easy reach.

It also features a powerful 24-volt AC drive motor. Its improved efficiency ensures powerful acceleration and high speeds combined with low consumption levels. This performance is achieved through the optimal cohesion of drive motor and drive controller with the added benefit of regenerative braking.

Of particular note are the superior safety features as well as the maximum operator comfort. Vibrations and stress on the operator, goods and truck are significantly reduced thanks to the sprung drive with ShockProtect.

Batteries with capacities up to 375 Ah are available for intensive applications over longer distances.

# ECE 118



Fork length-dependent dimensions ECE 118						
Fork length $l$ (mm)	Fork overhang (mm)	Overall length $l_1$ (mm)	Wheelbase <sup>1)</sup> $y$ (mm)	Turning radius <sup>1) 2)</sup> $W_a$ (mm)	Load distance <sup>1)</sup> $x$ (mm)	Working aisle width <sup>2)</sup> $A_{st}$ (mm)
1150	186	2424	1867	2115	913	2602
1400	186	2674	2117	2365	1163	2852
1600	186	2874	2317	2565	1363	3052
2400	560	3674	2745	2993	1791	3852

<sup>1)</sup> Load section raised, when load section lowered +55 mm

<sup>2)</sup> Battery M version; with L version: +72 mm

# Technical data in line with VDI 2198

Identification	1.1	Manufacturer (short form)		Jungheinrich
	1.2	Model		<b>ECE 118</b>
	1.3	Drive		Electrics
	1.4	Manual, pedestrian, stand-on, seated, order picker operation		tiller
	1.5	Load capacity/rated load	Q t	1.8
	1.6	Load centre distance	c mm	600
	1.8	Load distance	x mm	913
	1.9	Wheelbase	y mm	1867 / 1939
	Weights	2.1.1	Net weight incl. battery (see row 6.5)	
2.2		Axle load, w. load, front / rear		kg 1670 / 850
2.3		Axle load, w.o. load, front / rear		kg 165 / 565
Wheels / chassis	3.1	Tyres		VU / PU & Qu / VU
	3.2	Tyre size, at front	mm	Ø 230 x 65
	3.3	Tyre size, at rear	mm	Ø 85 x 110 / Ø 85 x 85
	3.4	Additional wheels (dimensions)	mm	Ø 125 x 54
	3.5	Wheels, number front/rear (x = driven wheels)		1x +2/2
	3.6	Track width, front	b <sub>10</sub> mm	368
	3.7	Track width, rear	b <sub>11</sub> mm	500
Basic dimensions	4.4	Lift	h <sub>3</sub> mm	122
	4.9	Height of tiller in drive position min. / max.	h <sub>14</sub> mm	1146 / 1428
	4.15	Lowered height	h <sub>13</sub> mm	85
	4.19	Overall length	l <sub>1</sub> mm	2426
	4.20	Length incl. back of forks	l <sub>2</sub> mm	1274
	4.21	Total width	b <sub>1</sub> /b <sub>2</sub> mm	720
	4.22	Fork dimensions	s/e/l mm	55 / 172 / 1150
	4.25	Width over forks	b <sub>5</sub> mm	540
	4.32	Floor clearance centre wheelbase	m <sub>2</sub> mm	30
	4.33	Aisle width for pallets 1000 x 1200 sideways	Ast mm	2624
4.34	Aisle width for pallets 800 x 1200 lengthways	Ast mm	2674	
4.35	Turning radius	W <sub>a</sub> mm	2187	
Performance data	5.1	Travel speed, w. / w.o. load	km/h	8 / 9
	5.2	Lift speed, w. / w.o. load	m/s	0.04 / 0.04
	5.3	Lower speed, w. / w.o. load	m/s	0.06 / 0.08
	5.8	Max. gradeability, laden/unladen	%	8 / 16
	5.10	Service brake		generated
Electrics	6.1	Drive motor rating S2 60 min.	kW	1.6
	6.2	Lift motor rating at S3 10%	kW	2.2
	6.3	Battery according to DIN 43531/35/36 A,B,C, no		B
	6.4	Battery voltage/nominal capacity K5	V/Ah	24 / 375
	6.5	Battery weight	kg	302
	6.6	Energy consumption according to VDI cycle	kWh/h	0.47
Misc.	8.1	Type of drive control		impulse control system
	8.4	Sound pressure level at operator's ear according to EN 12053	dB (A)	73

# Benefit from the advantages



## 'Intelligent' control and powerful 3-phase AC drive motor

The ECE is equipped with a 3-phase AC drive motor, offering you greater performance while simultaneously reducing operating costs. Make the most of these advantages:

- High level of efficiency with excellent energy management.
- Powerful acceleration and high speed.
- Rapid change in direction.
- No rolling back on gradients.
- Maintenance-free drive motor.

## Optimum driving characteristics

- ProTracLink: Sprung and cushioned support wheels – linked via a coupling rocker – ensure safe handling in all driving conditions.

- ShockProtect: Spring drive suspension provides protection for the operator, truck and load. Optimally adjusted to the load, the suspension cushions the operator and frame against impact.

## Comfortable travel

The SpeedControl impulse control system facilitates comfortable, safe travel with adjustment for every application: The speed stipulated on the travel switch will be maintained in every travel situation – even on uphill and downhill gradients.

## Especially narrow design

Easy to handle even in confined spaces due to the narrow truck width of just 720 mm.

## Everything at a glance

The optimally configured controls provide the operator with all the information

required at a glance:

- CanDis provides information on the battery charge status, the hour-meter and the service code storage (optional).
- CanCode facilitates activation of the truck via PIN, with authorised operators individually specified (optional).
- The individual setting of the drive parameters (optional) allows for optimum adjustment to individual requirements.

## Long operating times

Battery capacities of up to 375 Ah guarantee long operating times:

- Battery compartment M: 180/250 Ah
- Battery compartment L: 300 / 375 Ah

## Additional equipment

- Writing board incl. paper clip.
- Storage compartment located in the backrest.
- Step for 2nd level in the backrest.

## Jungheinrich UK Ltd.

Head Office:  
 Sherbourne House  
 Sherbourne Drive  
 Tilbrook  
 Milton Keynes MK7 8HX  
 Telephone 01908 363100  
 Fax 01908 363180

info@jungheinrich.co.uk  
 www.jungheinrich.co.uk

The German production facilities in Norderstedt and Moosburg are certified. **ISO 9001**  
**ISO 14001**

Jungheinrich fork lift trucks meet European safety requirements.



**JUNGHEINRICH**  
 Machines. Ideas. Solutions.