

Vibration damping to protect the operator, truck and load through ShockProtect

Maintenance-free AC drive motor provides high productivity

Compact design for flexibility usage

ProTracLink suspension for high stability

Multi-shift operation possible with sideways battery exit (optional)



ERE 120

Electric Pedestrian/Stand-On Pallet Truck (2000 kg)

Use the ERE 120 to increase the productivity of your goods transport. Thanks to the high speed it reaches in rider mode, goods can be handled efficiently, easily transported over longer distances and also picked as required.

With its compact design, the ERE 120 combines the manoeuvrability of a pedestrian truck with the speed of a ride-on truck, enabling you to improve the efficiency of your operations. It also features a powerful 24-volt AC drive motor. Its

improved efficiency ensures powerful acceleration and high speeds combined with low consumption levels.

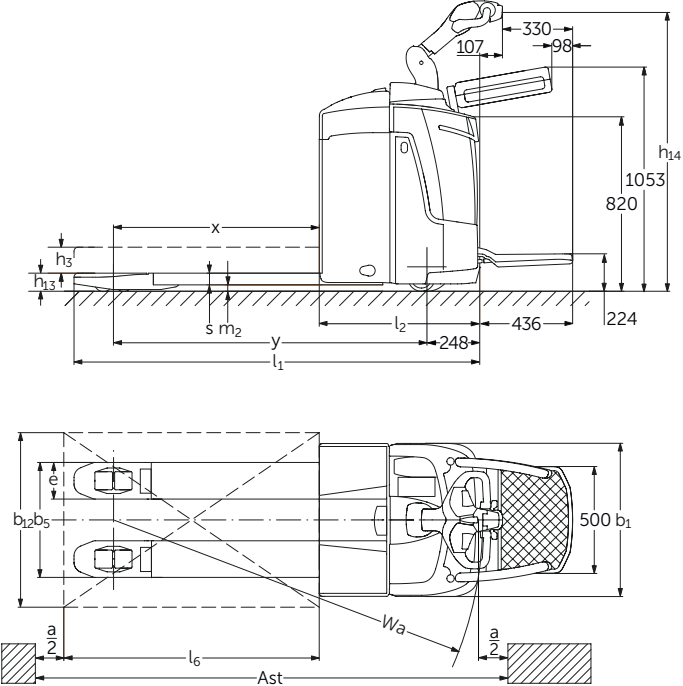
Of particular note are the superior safety features as well as the high operator comfort in any situation:

- In addition to the soft sprung, folding platform, the entire drive system is cushioned with a ShockProtect suspension. The advantage: The vibrations and stress on the operator, goods and truck are significantly reduced.

- Safe travel stance when driving due to optional side restraints. These enable a higher speed of 8.5 km/h to be reached when transporting goods over longer distances.

If they are to be used intensively over longer distances or for loading and unloading lorries, ERE 120s can be fitted with batteries with capacities of up to 375 Ah as well as the option of sideways battery exchange (optional) for multishift operation.

ERE 120



Technical data in line with VDI 2198

as at: 08/2012

Identification	1.1	Manufacturer (abbreviation)	Jungheinrich	
	1.2	Manufacturer's type designation	ERE 120	
			stand-on platform	
	1.3	Drive	electric	
	1.4	Operator type	stand	
	1.5	Load capacity/rated load	Q (t)	2.0
	1.6	Load centre distance	c (mm)	600
	1.8	Load distance	x (mm)	913 ¹⁾
	1.9	Wheelbase	y (mm)	1347/1419
Weights	2.1	Service weight incl. battery (see line 6.5)	kg	662
	2.2	Axle loading, laden front/rear	kg	1485/1292
	2.3	Axle loading, unladen front/rear	kg	189/588
Wheels, Chassis	3.1	Tyres	Vulkollan®/PU + quarz/Vulkollan®	
	3.2	Tyre size, front	mm	Ø 230x70
	3.3	Tyre size, rear	mm	Ø 85x100/Ø 85x85
	3.4	Additional wheels (dimensions)	mm	Ø 125x54
	3.5	Wheels, number front rear (x = driven wheels)		1x +2/2 or 4
	3.6	Track width, front	b ₁₀ (mm)	500
	3.7	Track width, rear	b ₁₁ (mm)	338/368/498
Basic Dimensions	4.4	Lift (standard mast)	h ₃ (mm)	122
	4.9	Height of tiller in drive position min./max.	h ₁₄ (mm)	1146/1428
	4.15	Height, lowered	h ₁₃ (mm)	85
	4.19	Overall length	l ₁ (mm)	1834/1906 ⁵⁾
	4.20	Length to face of forks	l ₂ (mm)	682/754 ⁵⁾
	4.21	Overall width	b ₁ /b ₂ (mm)	720/-
	4.22	Fork dimensions	s/e/l (mm)	55/172/1150
	4.25	Width across forks	b ₅ (mm)	510/540/670
	4.32	Ground clearance, centre of wheelbase	m ₂ (mm)	30
	4.33	Aisle width for pallets 1000 x 1200 crossways	Ast (mm)	2032/2104 ³⁾
4.34	Aisle width for pallets 800 x 1200 lengthways	Ast (mm)	2082/2154 ²⁾	
4.35	Turning radius	Wa (mm)	1595 ⁴⁾	
	at creep speed	Wa (mm)	1667 ⁴⁾	
Performance Data	5.1	Travel speed, laden/unladen	km/h	7.5/8.5
	5.2	Lift speed, laden/unladen	m/s	0.05/0.06
	5.3	Lowering speed, laden/unladen	m/s	0.055/0.04
	5.7	Gradeability, laden/unladen	%	3/6
	5.8	Max. gradeability, laden/unladen	%	8/16
5.10	Service brake		regenerative	
E-Motor	6.1	Drive motor rating S ₂ 60 min	kW	1.6
	6.2	Lift motor rating S ₃ 10%	kW	2.2
	6.3	Battery acc. to DIN 43531/35/36 A, B, C, no		B
	6.4	Battery voltage, nominal capacity K ₅	V/Ah	24/250 (375)
	6.5	Battery weight	kg	230
Others	8.1	Type of drive control		impulse control
	8.4	Sound level at the driver's ear according to EN 12 053	dB(A)	73

- 1) Load section lowered +55 mm
 2) diagonal according to VDI +204 mm; lateral battery exchange +72.5 mm; with platform folded down +436 mm
 3) diagonal according to VDI +368 mm; lateral battery exchange +72.5 mm; with platform folded down +436 mm
 4) Load section lowered +55 mm; lateral battery exchange +72.5 mm; with platform folded down +436 mm
 5) with lateral battery exchange + 72.5 mm

This specification sheet according to VDI regulation 2198 only provides technical values for the standard truck. Non-standard tyres, different masts, additional equipment etc. could produce other values. Right reserved for technical changes and improvements.

Make use of the advantages



Optional side restraints for driver safety

Intelligent control and powerful 3-phase AC motor

The ERE is equipped with a maintenance free AC drive motor, offering you greater performance while simultaneously reducing operating costs. These advantages can be yours:

- High efficiency levels with excellent energy management.
- Powerful acceleration and high maximum speed.
- Rapid and smooth directional change.
- No roll back on ramps.
- Maintenance-free drive motor.
- Energy recovery through regenerative braking on deceleration.

The truck model can be adapted to the application

The truck is available in a number of different models, offering flexibility:

Version 1: Folding stand-on platform without restraints

- Pedestrian mode.
- Speed of 4.5 km/h when stand-on platform is folded up.
- Speed of 6 km/h when stand-on platform is folded down.

Version 2: Folding stand-on platform with restraints (optional)

- Pedestrian/rider mode.
- Speed of 4.5 km/h when stand-on platform is folded up and restraints retracted.
- Speed of 6 km/h when stand-on platform is folded down and restraint system retracted.
- Speed of 8.5 km/h when stand-on platform is folded down and restraints folded out.

Optimum travel characteristics

- ProTracLink: Sprung loaded and damped support wheels – linked via a torsion bar – ensure safe handling in all driving conditions.
- Jungheinrich ShockProtect: Protection for operator, truck and load through its sprung loaded drive wheel, thus dramatically reducing the vibration through the chassis.

Everything at a glance

The extensive driver displays provides the operator with all the information required at a glance all the time:

- CanDis provides information on battery charge status, hourmeter and service code storage (optional).



Well-arranged workstation



Perfect for loading and unloading lorries

- CanCode turns the truck on via a PIN, with authorised operators individually specified (optional).
- Adjustment of the drive parameter gives optimum adaptation to any application (optional).

Reduced maintenance costs

Service-friendly components and ease of access reduce your operating costs:

- Easily removable components with ease of access inside the chassis.
- Maximum speed only possible when forks are raised (optional). This reduces wear beneath the forks.

Long uptimes

Battery capacities of up to 375 Ah guarantee long uptimes:

- Battery compartment M: 180/250 Ah
- Battery compartment L: 300/375 Ah
- Sideways battery exchange for both battery compartments (optional).

Optional equipment

- Entry skids and entry rollers.
- Load guard.
- Cold store model.

Jungheinrich UK Ltd.

Head Office:
Sherbourne House · Sherbourne Drive
Tilbrook · Milton Keynes MK7 8HX

Phone 01908 363100
Fax 01908 363180

info@jungheinrich.co.uk
www.jungheinrich.co.uk



Jungheinrich trucks conform to the European Safety Requirements.

JUNGHEINRICH
Machines. Ideas. Solutions.